



Peterson & Glass
LONDON

The complete service

Catalogue

1978-79

A CHRISTMAS STOCKING STUFFER 2024 FROM PETERON PIPE NOTES

Peterson & Glass

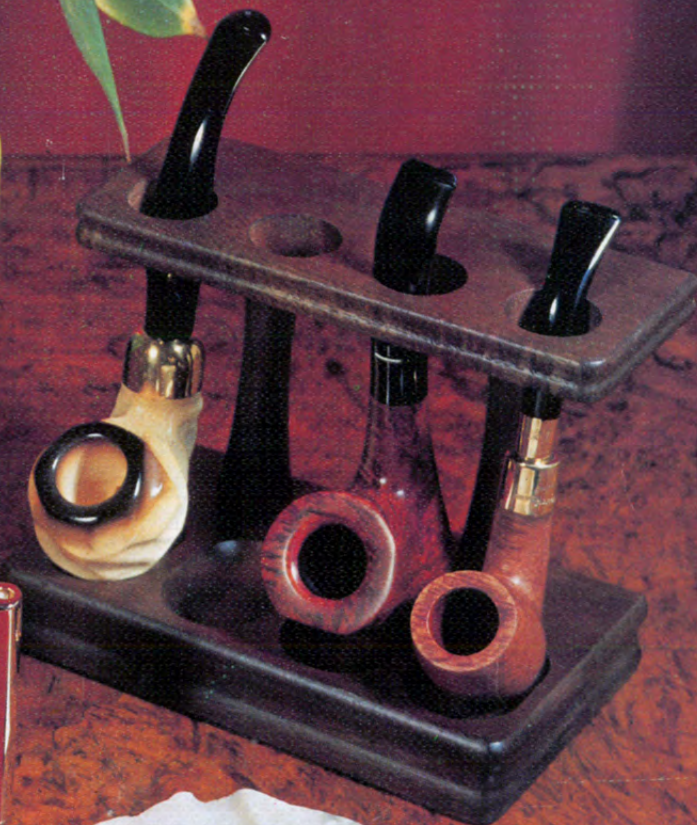


LONDON

The complete service

Catalogue

1978-79



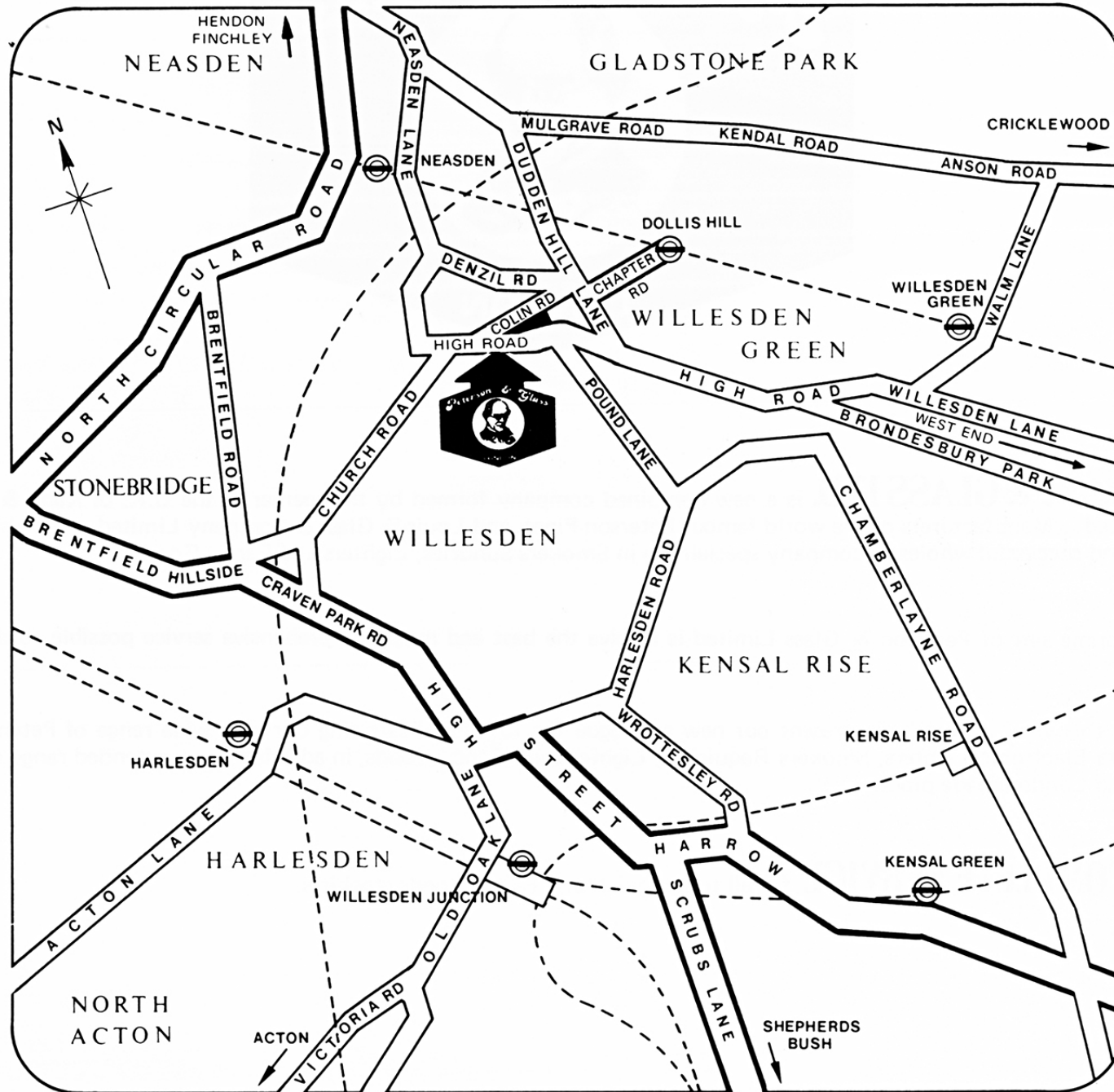


Peterson & GLASS LTD. is a new combined company formed by the merger in the U.K. of Kapp & Peterson Limited – Manufacturers of the world famous Peterson Pipes, and Louis S. Glass & Company Limited, the highly respected and successful wholesale company specialising in Smokers Sundries, Lighters and Fancy Goods.

The prime aim of Peterson & Glass Limited is to give the best and most comprehensive service possible to the Trade.

With this view in mind, we present our new catalogue for 1978/9. Illustrating our very wide range of Peterson Pipes, Tanita Electronic Lighters, Smokers Requisites, Lighters and Fancy Goods, in addition to an extended range of imported and London made pipes.

A COMPLETE SERVICE for all tobacconists and Fancy Goods stockists.





1978/9

Permanent Showroom and Offices at:
350/352 High Road
Willesden
London NW10 2EG

Telephone: 01-451 0222/3

Nearest Station Dollis Hill (Bakerloo Line) see page 2

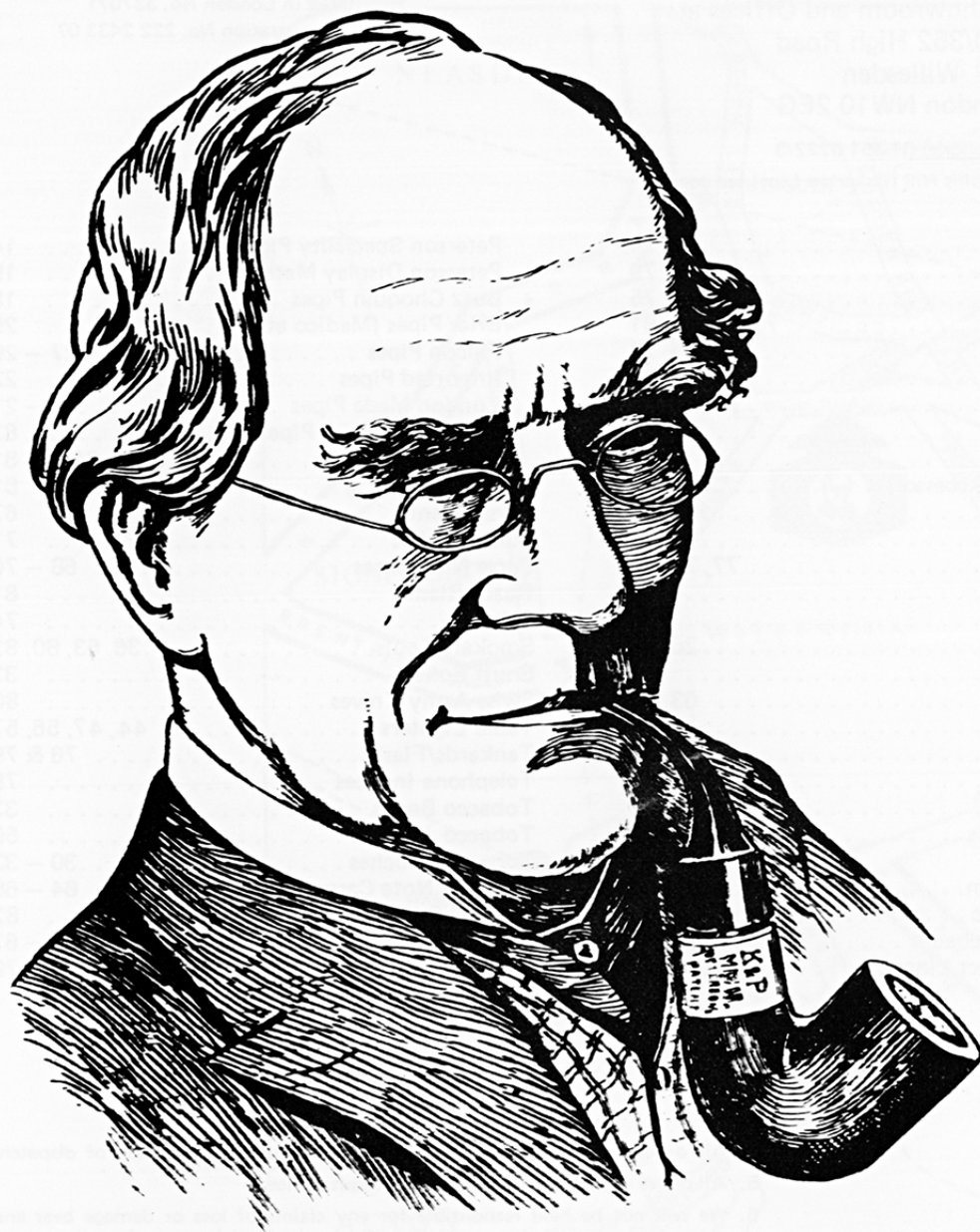
Registered in London No. 337071
V.A.T. Registration No. 232 2433 07

INDEX

Ashtrays/Ashstands	39, 40, 80	Combs	74	Peterson Speciality Pipes	14
Butane Gas Refills	62	Compacts	79	Peterson Display Material	15
Cigar Cases	34	Desk Items	75	Butz Choquin Pipes	18
Cigar Cutters	36, 80	Gift Items	73, 76, 79, 81	Briar Pipes (Medico etc.)	25
Cigar Holders	37	Key Cases	72	Falcon Pipes	27 - 29
Cigarette Boxes	33	Key Rings	78	Imported Pipes	22
Cigarette Cases	34, 35, 55	Lighter Flints	61	London Made Pipes	19 - 21
Cigarette Filters	38	Lighter Pochettes	61	Low Priced Briar Pipes	23, 83
Cigarette Holders	26, 37 & 38, 83	Lighter Refills	62	Speciality Pipes	24, 26, 81
Cigarette Lighters		Lighter Spares & Accessories	61	Playing Cards	81
Tanita	49-52 & 83	Manicure Sets	74	Purses Gents	67
Colibri	45-47	Nail Clippers	73	Purses Ladies	71
Dunhill	41	Pen Knives	77, 78, 80	Purse Note Cases	68 - 70
Imco	54	Pens	81	Razor Blades	81
Maruman	48	Pen Stands	75	Scissors	74
Medico	54	Petrol Lighters	26, 81	Smokers Tools	36, 63, 80, 83
Polo	54	Pill Boxes	79	Snuff Boxes	33
Ronson	42 - 44	Pipe Accessories	63, 80	Swiss Army Knives	80
Sim	53 & 81	Pipe Cleaners	63	Table Lighters	44, 47, 56, 57
Win	48	Pipe Filters	63	Tankards/Flasks	76 & 79
Zippo	55	Pipe Lighters	46, 48, 55, 83	Telephone Indeces	75
Others	26, 55, 56, 81, 83	Pipe Pouches	30 & 32	Tobacco Boxes	33
Cigarette Machines	60	Pipe Racks & Rests	58, 59	Tobacco Jars	59
Cigarette Papers	60	Pipes		Tobacco Pouches	30 - 32
		Peterson System	5 - 8	Treasury Note Cases	64 - 65
		Peterson Classic	9 - 12	Walking Sticks	82
		Peterson Meerschaum	16 - 17	Wallets	66 - 67
		Peterson Product Lines	13	Watch Straps	79

CONDITIONS OF SALE

- Orders of £75 or over (excluding V.A.T.) are dispatched Carriage Paid. — Carriage is charged on orders below the £75 value.
- Any shortages or breakages must be notified to us within 3 days of receipt of goods.
- Settlement Terms are 3¼% 7 days or 2½% 30 days except on items quoted as nett on invoice. The discount deductible and the relative dates are stated on Invoices. Terms are strictly nett after 30 days.
- All orders are accepted subject to the price ruling at the date of dispatch.
- All prices are subject to alteration without notice.
- We will not be held responsible for any claims of loss or damage over and above the value of the goods dispatched, where arising out of negligence by us or our carriers, or any other causes whatsoever.



A fine pipe is not only a source of lasting pleasure but the expression of a man's personality. And since every man is an individual, a good pipe will reflect this individuality in the character of the briar and the skill with which it is fashioned. Charles Peterson understood this essential principle when he began making pipes in Dublin a hundred years ago. He was a master craftsman with a feeling not only for the subtleties of the materials with which he worked but also for the tastes and preferences of the discerning pipe smoker. The accuracy of his judgement and extent of his skill are borne out by the fact that Peterson pipes are now sold in more than fifty countries in all five continents. The story of a Peterson pipe begins with a root of *Erica Arborea* — the tree heath or *bruyere* — which may be anything between 80 and 150 years old. The warm, dry climate of the Mediterranean region, which promotes slow, uniform growth, produces the best roots, and only the best are chosen by Peterson craftsmen. Great skill is demanded to cut a pipe from a block of briar so as to use the available material to best advantage. It is a skill which is not acquired overnight. That is why tradition plays such an important part in the creation of a Peterson — tradition that goes back to the days when Charles Peterson worked in the window of his premises in Dublin's fashionable Grafton Street, entralling the passers-by with visible evidence of his pipe-making genius.

The range of pipes that we present in the following pages is a culmination of a century of experience and of the nurturing of carefully-guarded standards in every phase of production. We now employ more than hundred highly-trained craftsmen in our new premises, but each pipe we produce remains an individual example of the craftsman's art, fashioned and finished with equal pride, care, and meticulous attention to detail.

In a hurried world the quiet enjoyment of a fine pipe stands forth as a civilised — and civilising — pleasure. The truth of our original motto has never been more discernible: "The Thinking Man smokes a Peterson Pipe".

DE LUXE MODEL 5S



The Peterson System
In the year 1890 the famous Peterson System pipe introduced a revolution in smoking which brought new pleasure to smokers the world over. This was followed in 1898 by the Peterson Lip Mouthpiece, another innovation designed with a deep understanding of the pipeman's needs. The System pipe smokes cool and dry to the last puff, and has won for its creators numerous Gold Medal awards. The Peterson Lip, by adapting the pipe precisely to the contours of the lips and teeth, ensures a comfortable and satisfying smoke at all times.

"De Luxe" System

Luxurious age mellowed briar in brown matt or best sandblast finish. Hall marked sterling silver mounts. Hand fitted saddle mouthpiece spaced to allow for years of wear. Ten models to choose from in Peterson Lip only. The pride of a connoisseur's collection.



4S SMOOTH

20S SANDBLAST

"Premier" System

Specially selected first quality briar in this series is mounted with a hall-marked sterling silver band and a fine army style Peterson Lip mouthpiece. Four small-medium sized models in honey polished or sandblast finish, the five large models in sandblast only.



312 SANDBLAST

317 SMOOTH

DELUXE & PREMIER SYSTEMS ARE AVAILABLE IN THREE SIZE RANGES — TEN BOWL STYLES IN SMOOTH MATT OR SPECIAL SANDBLAST FINISH

PREMIER LARGE (SANDBLAST ONLY) DE LUXE SPACE FITTED HAND CUT MOUTH-PIECE)

LARGE SIZES



PREMIER 301
DE LUXE 1S



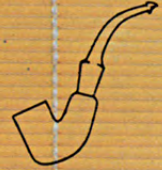
XL 302
XL 2S



305
5S



XL 307
XL 9S



309
4S



312
11S

MEDIUM



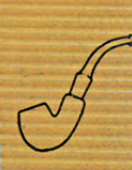
303
3S



313
8S



314
20S

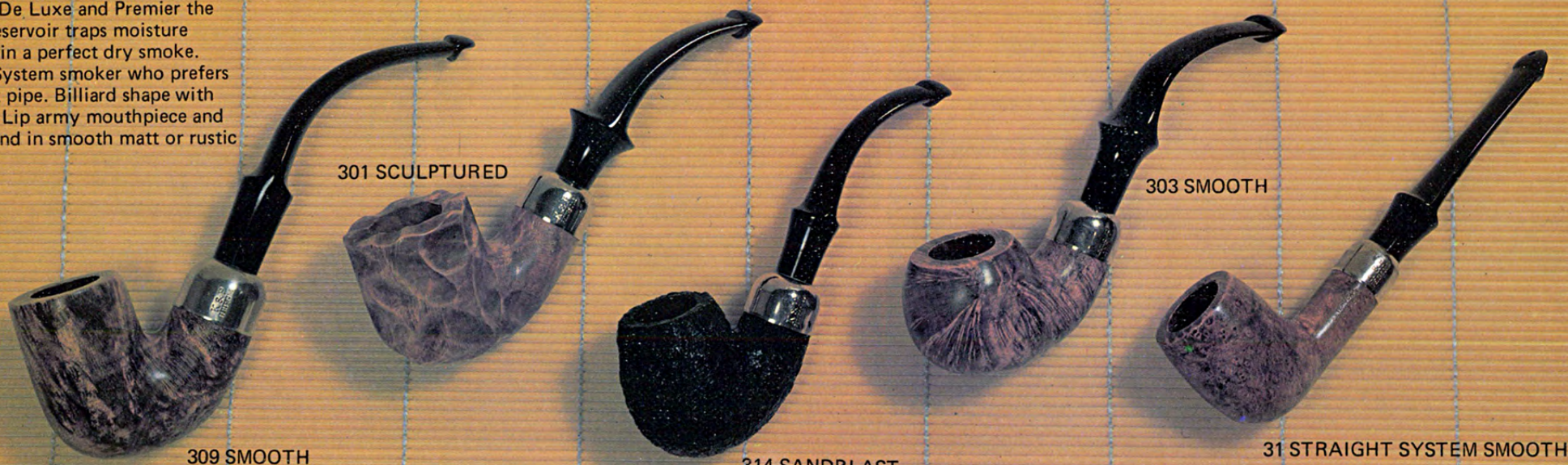


317
12½S

SMALL

"Standard" System

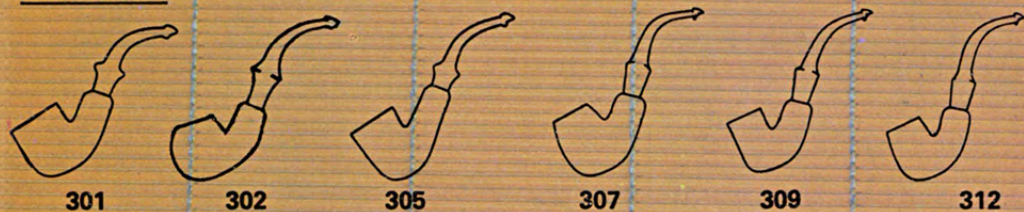
A high standard quality briar fitted with nickel mounts and army style Peterson Lip mouthpieces. Ten models to choose from and a choice of matt brown or sandblast finish. Like the De Luxe and Premier the system reservoir traps moisture resulting in a perfect dry smoke. For the System smoker who prefers a straight pipe. Billiard shape with Peterson Lip army mouthpiece and nickel band in smooth matt or rustic finish



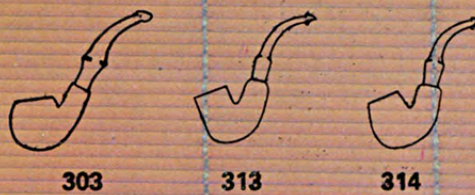
"Peterson Standard Systems are available in ten bowl styles plus the Straight System."

Bent System shapes are available in plain smooth finish, sculptured finish or dark sandblast/rustic finish. Straight Systems in smooth or sandblast finish only."

LARGE SIZE



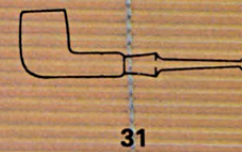
MEDIUM



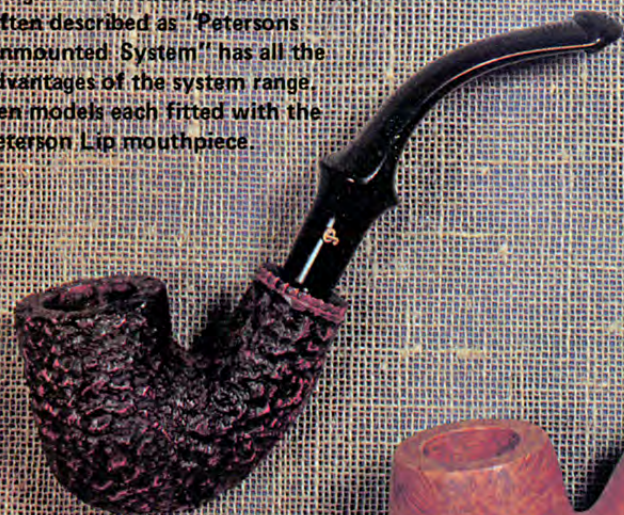
SMALL



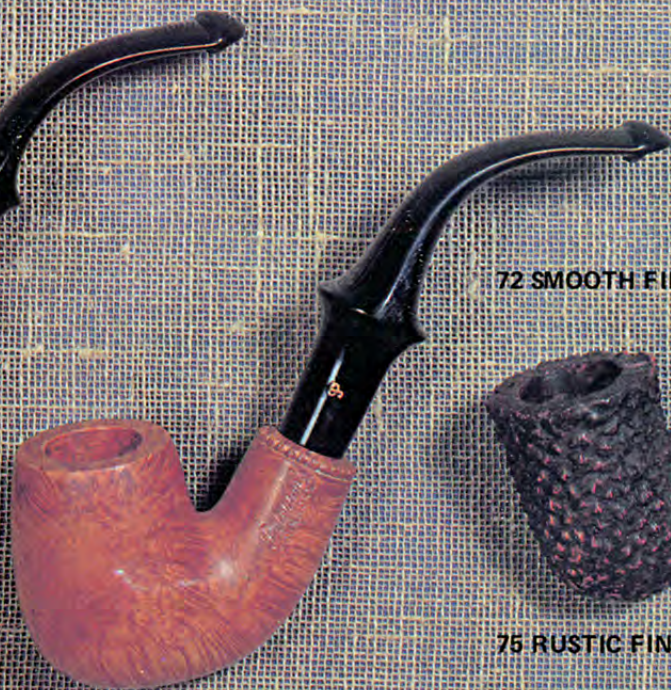
STRAIGHT SYSTEM



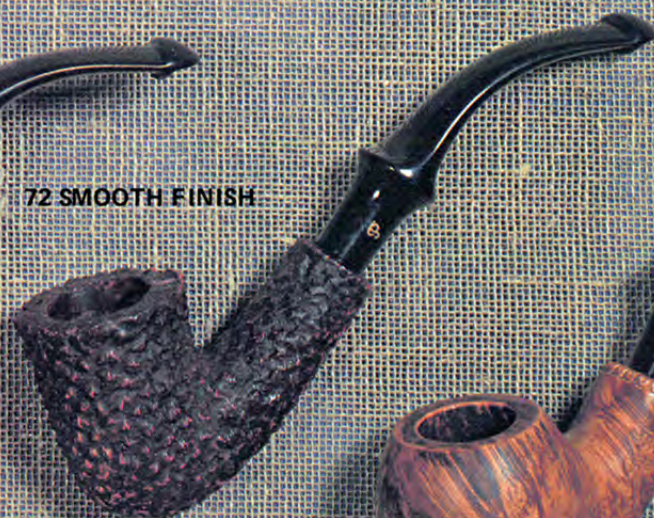
"Dunmore Briars"
Beautifully grained best quality briar
in light brown matt or rustic finish.
Often described as "Petersons
Unmounted System" has all the
advantages of the system range.
Ten models each fitted with the
Peterson Lip mouthpiece.



73 RUSTIC FINISH



72 SMOOTH FINISH

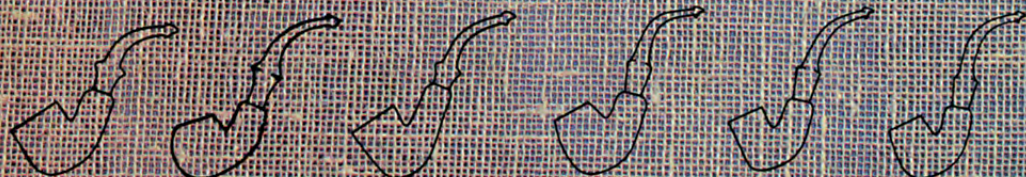


75 RUSTIC FINISH



76 SMOOTH FINISH

LARGE SIZE



71

70

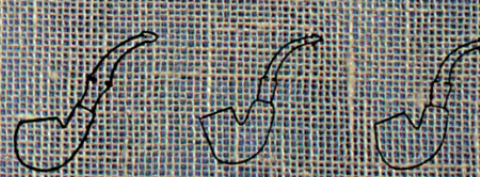
75

78

79

72

MEDIUM

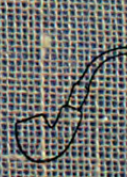


76

73

74

SMALL



77

"Gold Mounted Supreme" Briars
Exceptionally rich in grain these
pipes are made from only the finest
briar and are almost as scarce as
Straight Grains. Each pipe has a
highly polished light mahogany
finish and is fitted with a slender
gold band. With Peterson Lip or
Fishtail stems.



SHAPE 14S

SHAPE 417

In classic shapes as available—
the last word in elegance and
distinction.

In this unique Spigot finished pipe,
Peterson craftsmanship perfects
the union of finest quality briar and
precious metals. Spigot Briars are
available in 12 selected Classic
shapes and all fitted with fishtail
mouthpieces.



SHAPE 120
BLACK/SILVER

SHAPE 68
RED/SILVER

There are three styles of Spigot:—
Natural finish briar with hall-marked
Gold mountings Red semi-matt briar
with hall-marked silver mountings
and Ebony Black lustre finished briar
with hall-marked silver mountings.
All Spigot pipes are presented in an
exclusive leather "holster" carrying
case.

"De Luxe Classic" Briars

The Deluxe Classic Briar is made by master craftsmen from selected beautiful grained age mellowed root. Nothing is left to chance in the making, each pipe is inspected for the slightest imperfection. Thirty five shapes in matt finish with Peterson Lip or Fishtail mouthpieces.



SHAPE 82S

"Dublin and London" Briars

Finest quality old seasoned briar in smooth golden finish. For those who prefer a natural briar with the extra Peterson features. Thirty-five shapes fitted with Peterson Lip or Fishtail mouthpieces.



SHAPE 87S

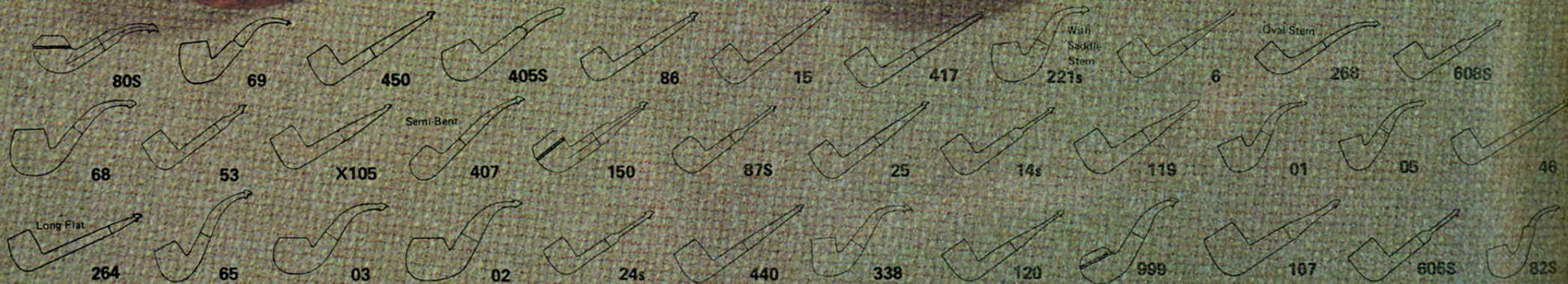


SHAPE 150



SHAPE 999

CLASSIC SHAPES



"Dunmore Premier Classics"

A Premier quality briar in light brown matt or rustic finish. Unifit mouth-piece lending style to a quality Classic pipe. In smooth-matt and deep rustic finish.



SHAPE 999 RUSTIC

"Kildare" Briars

A quality briar with rich grain in a light brown semi-matt finish. This elegant classic pipe has proved a most successful addition to our range. Thirty-five shapes in matt finish with Peterson Lip or Fishtail mouthpieces.



SHAPE 268

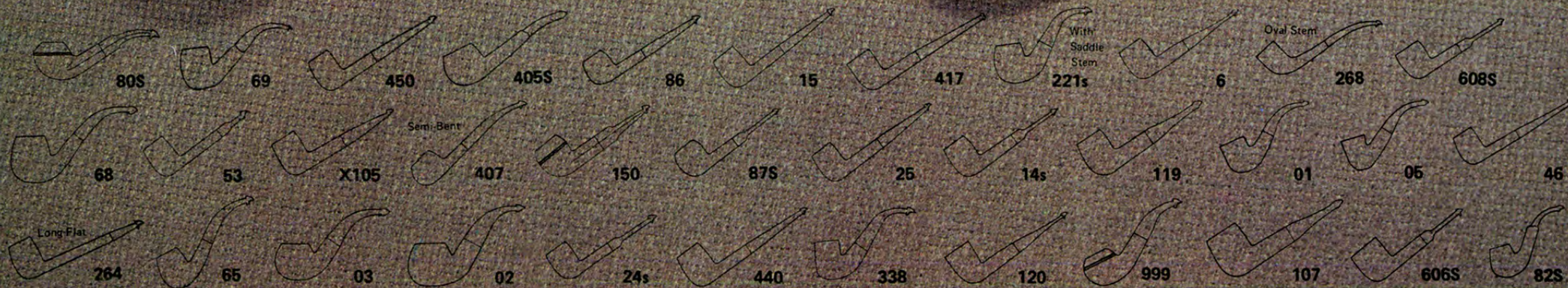


SHAPE X105 SMOOTH



SHAPE 03

CLASSIC SHAPES



Peterson CLASSIC BRIARS

"Kapet" Briars

A smooth nut-brown finish characterises the "Kapet" available in thirty five shapes each retaining all the natural characteristics of the raw material, with Peterson Lip or Fishtail mouthpieces – available in thirty five shapes.

"Kapruf" Briars

The "Kapruf" has a shell-like appearance brought about by the skilled application of fine sand resulting in a light natural grained pipe, red in colour, particularly appealing to sportsmen. Peterson Lip or Fishtail mouthpieces – available in thirty five shapes.

"Dental" Briars

Six shapes by Petersons in smooth matt finish specially made for the smoker with dentures. Dental bits are scientifically designed for maximum comfort and extra grip. Fine quality briar, well balanced and exceptionally light to hold. Shapes 14, 24, 45, 65, 86 and 608 only with Dental Lips.

SHAPE 25



SHAPE 221S



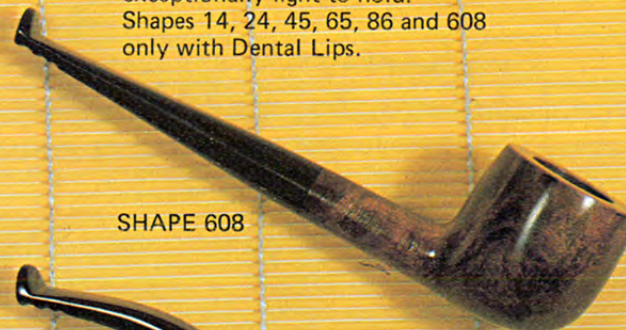
SHAPE 80S



SHAPE 53



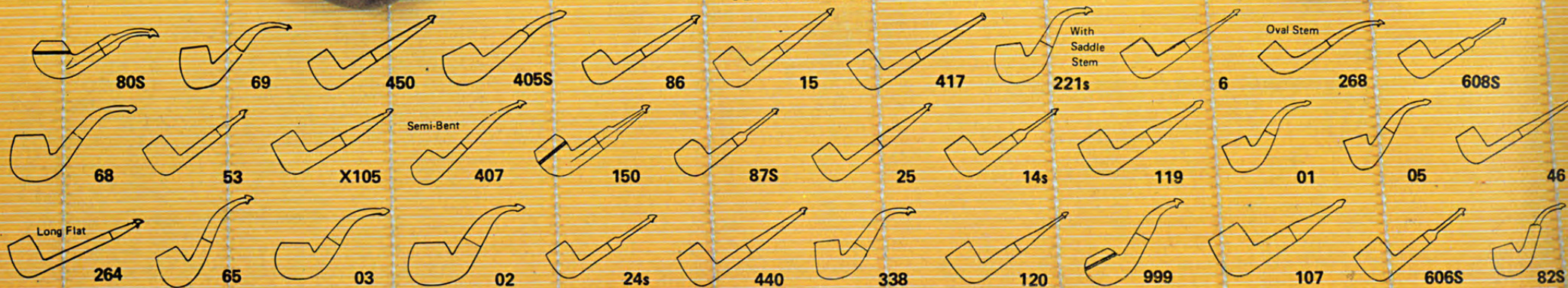
SHAPE 608



SHAPE 65



CLASSIC SHAPES



"K" Briars

Smooth polished quality briar gives a cool dry smoke. In thirty five different shapes with Fishtail Mouthpieces. Excellent value.



SHAPE 338

"Shamrock" Briars

Twenty Nine different shapes in smooth matt finish each fitted with slimline fishtail mouthpieces. Outstanding value for this lower priced pipe with excellent character of grain. Not Available in Shapes 01, 02, 03, 05, 221 or 338.



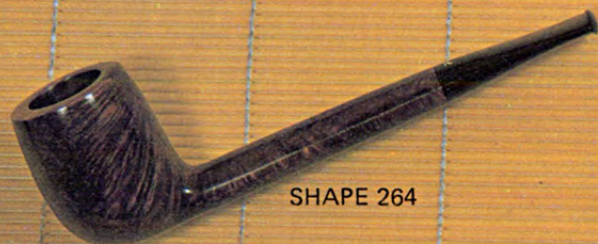
SHAPE 268

"Donegal Rocky" Briars

A handsome nickel ferrule graces this distinguished line of pipes for the discerning smoker who expects good quality with good value. A modestly priced briar with a rustic finish available in thirty five different shapes with fishtail mouth pieces.



SHAPE 68



SHAPE 264

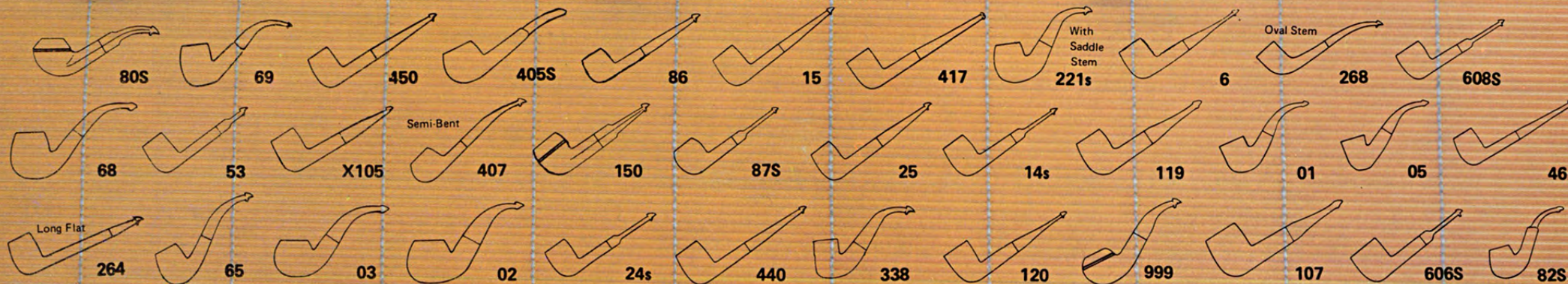


SHAPE X105



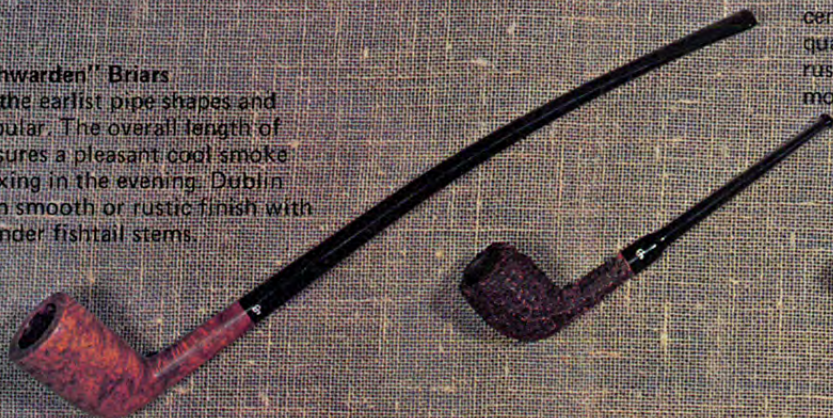
SHAPE 107

CLASSIC SHAPES



"Churchwarden" Briars

One of the earliest pipe shapes and still popular. The overall length of stem assures a pleasant cool smoke for relaxing in the evening. Dublin Shape in smooth or rustic finish with long slender fishtail stems.



"Belgique & Calabash" Briars

Peterson's weightless midget. Two petite Peterson shapes crafted with all the care and know how of century old pipe makers, from finest quality briar in smooth matt and rustic finishes with Fishtail mouthpieces only.



"Tankard and Barrel" Briars

To add to your collection two attractively shaped pipes finished in rich matt or rustic. A quality briar fitted with a nickel mount and the instant replacement army push mouthpiece, available with Peterson Lip or Fishtail stems.



"Giant" Briars

An outside Peterson pipe for an outdoor man well balanced and turned from the occasional large block of briar. Fashioned in billiard or full bent shapes of very fine wood. Smooth matt or rustic finish with Peterson Lip or Fishtail mouthpieces.



"Junior" Briars

A light weight range in smooth matt or rustic finish. Excellent quality with all the fine characteristics of a Peterson pipe. Preferred by pipe beginners or those who prefer a short smoke, with Peterson Lip or Fishtail mouthpieces.

In four shapes, Pot, Billiard, Prince and Bent.



"Silver Mounted Army" Briars

This series in six different shapes each with a fine hall marked sterling silver mount and army style instant change Peterson Lip mouthpiece. Favoured by outdoor smokers, available in a rich honey brown matt finish.



"K & P Nickel Mounted Army" Briars

Beautifully grained army style briars fitted with nickel mounts and army style instant replacement fishtail stems. In twelve different shapes in rich brown semi matt finish. Excellent value for a simple sturdy pipe.



6 PIPE SHOWCARD



6 PIPE DISPLAY BOX



12 PIPE DISPLAY BOX

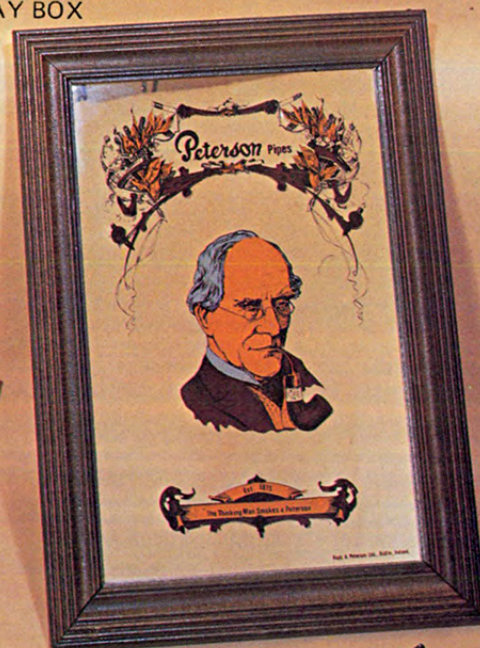


SHOWCARDS FOR BRIAR & MEERSCHAUM

PETERSON SYSTEM SHOWCARD*



PETERSON MIRROR



PETERSON PRODUCT SHOWCARD**



PETERSON COUNTER MAT



PETERSON "LOGO" PLAQUE



COLLAPSIBLE BOXES



PIPE DISPLAY RINGS



PETERSON 6 PIPE DISPLAY STAND

AUTHORISED AGENT DECAL

*Special display pack available containing 12 System Pipes.

** Special display pack available showing 4 pipe ranges, 2 each on showcard with 4 each in reserve total 24 pipes

Genuine Block Meerschaum is a natural mineral and has long been acknowledged for its fine smoking qualities. Light in weight, Meerschaum brings out the true flavour of tobacco and from the start ensures a cool dry smoke.

The "Super Calcining" process applied to all Peterson Block Meerschaums gives the best possible durability.

Peterson genuine Block Meerschaum pipes are available in a selection of five distinctive finishes in System, Classic and Free Style shapes:—



150S

Golden Supreme

Top of the range smooth yellow polished finish. System models with sterling silver mounts. Classic Shapes.



87

Tawny De Luxe

Yellow rustic finish. System models with gold plated mounts. Classic shapes. Free Style shapes.



FS3

Golden Princess

"New" smooth yellow polished finish. System models with gold plated mounts. Classic shapes. Free Style shapes.



307



303

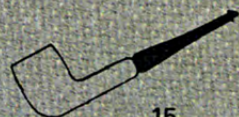


314

CLASSICS All Classic and Kapmeier Lines are fitted with Peterson 'Unifit' Interchangeable Mouthpieces



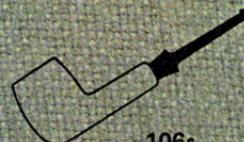
6s



15



87s



106s



120



406



606s



608



69



80s



999



150s



FS1

Yellow Aboriginal

Hand sculptured smooth polished finish. System models with gold plated mounts. Free Style shapes.



15

Red/Black Premier

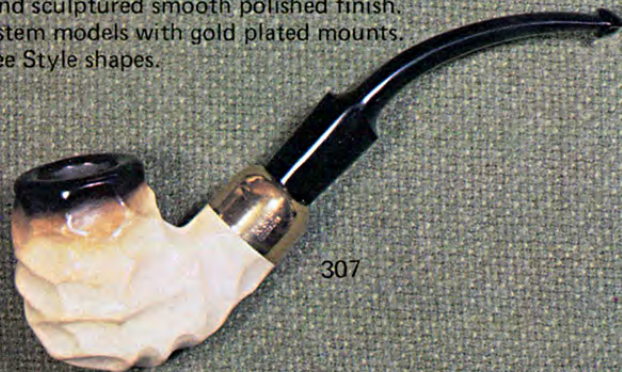
Rugged deep handcarved finish. System models with silver plated mounts. Classic shapes.



606S

Kapmeer Meerschaum lined Briars

Combining the endurance of briar and the luxury of Meerschaum smoking quality. Classic shapes in a choice of satin matt smooth finish or deep red sandcarved finish.



307



302

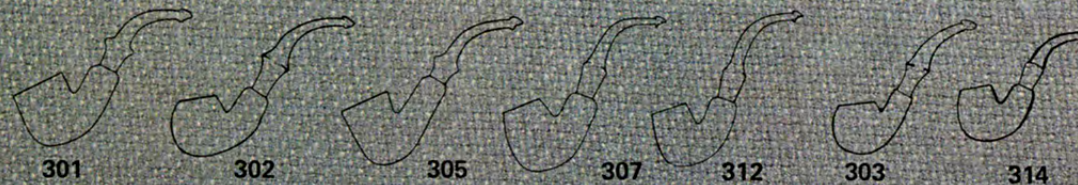


106S

SYSTEMS

LARGE SIZES

MEDIUM SIZES



FREESTYLE

